

South Okanagan Sailing Association

Bruno Lieppe Cup 2023

SAILING INSTRUCTIONS (SIs)

1 RULES

- 1.1 The event is governed by the rules as defined in *The Racing Rules of Sailing*.

2 CHANGES TO SAILING INSTRUCTIONS

- 2.1 Any change to the sailing instructions will be posted before 1800 on the day it will take effect, except that any change to the schedule of races will be posted by 2000 on the day before it will take effect.

3 COMMUNICATIONS WITH COMPETITORS

- 3.1 Notices to competitors will be posted on the official notice board located at the front of the Clubhouse. In addition, they may be posted on SOSailing.ca.
- 3.2 On the water, the race committee does intend to monitor and communicate with Bruno Lieppe Cup competitors on VHF who must monitor channel 68.

4 CODE OF CONDUCT

- 4.1 Competitors and support persons shall comply with reasonable requests from race officials.

5 SIGNALS MADE ASHORE

- 5.1 Signals made ashore will be displayed at the flagpole in front of the SOSA Club house.
- 5.2 When flag AP is displayed ashore, '1 minute' is replaced with 'not less than 15 minutes' in Race Signals AP.

6 SCHEDULE OF RACES

- 6.1 Dates of racing are:

Bruno Lieppe Cup – July 16th

- 6.2 Schedule is:

Bruno Lieppe Cup – One race

- 6.3 The scheduled time of the warning signal for the Bruno Lieppe Cup – 10:55 on July 16th

- 6.4 To alert boats that a race or sequence of races will begin soon, the orange starting line flag may be displayed with several sound signals at least one minute before a warning signal is made.

7 CLASS FLAGS

The Bruno Lieppe Cup Class flag is **WHITE**

8 RACING AREA

8.2 The racing area is as described in Course Diagram below.

9 COURSES

9.1 Course diagram below shows the marks(s), and the distance between the marks. The course will be decided on the day to give a race time of approximately four hours for a boat in the middle of the fleet.

9.2 Courses may be shortened by VHF.

9.3 Legs of the course will not be changed after the preparatory signal. This changes RRS 33.

10 MARKS

Bruno Lieppe Cup marks are standard SYC marks.

11 THE START

11.1 Races will be started using RRS 26 with the warning signal made 5 minutes before the starting signal.

11.2 The starting line is between a staff displaying an orange flag on the signal vessel at the starboard end and the course side of the port-end starting mark.

11.3 If any part of a boat's hull is on the course side of the starting line at her starting signal and she is identified, the race committee will attempt to hail her sail number. Failure to hail her number, failure of her to hear such a hail, or the order in which boats are hailed will not be grounds for a request for redress. This changes RRS 62.1(a).

12 SHORTEN COURSE

12.1 To shorten course, the race committee will fly flag 'S' and announce the change via VHF. The finishing line will be moved to a new position at the next rounding mark. Competitors are to continue sailing the designated course until the race committee finishes them.

13 THE FINISH

13.1 The finishing line is between a staff displaying a blue flag on the finishing mark at the starboard end and the course side of the port end finishing mark. Care should be taken if a course is shortened to finish in the indicated direction.

13.2 If the race committee is absent when a boat finishes, she shall report her finishing time, and her position in relation to nearby boats, to the race committee at the first reasonable opportunity.

14 PENALTY SYSTEM

The Two-Turns Penalty is to be used.

15 TIME LIMITS

Bruno Lieppe Cup – any boat finishing outside the time limit of five hours will not be scored.

16 HEARING REQUESTS

- 16.1 The protest time limit is 30 minutes after the race time limit expires.
- 16.2 Hearing request forms are available from the race office.
- 16.3 Notices will be posted no later than 30 minutes after the protest time limit to inform competitors of hearings in which they are parties or named as witnesses. Hearings will be held in the protest room, located at the Clubhouse, beginning at the time posted.
- 16.4 RRS 62.2(a) and 66.2(a) do not apply.
- 16.5 The right of appeal from a protest committee decision is denied as provided in rule 70.5[(a)][(b)][(c)].

17 SCORING

Bruno Lieppe Competitors will be scored using Pacific PHRF TOT.

18 SAFETY REGULATIONS

- 18.1 A boat that retires from a race shall notify the race committee at the first reasonable opportunity.
- 18.2 Competitors parking is not permitted inside the gate to SOSA for the duration of the Naramata Mug weekend.

19 PRIZES

- 19.1 Prizes will be given for the first, second and third overall.
- 19.2 Prize giving is targeted to be at 18:00hrs on Saturday July 22nd at SOSA.

20 RISK STATEMENT

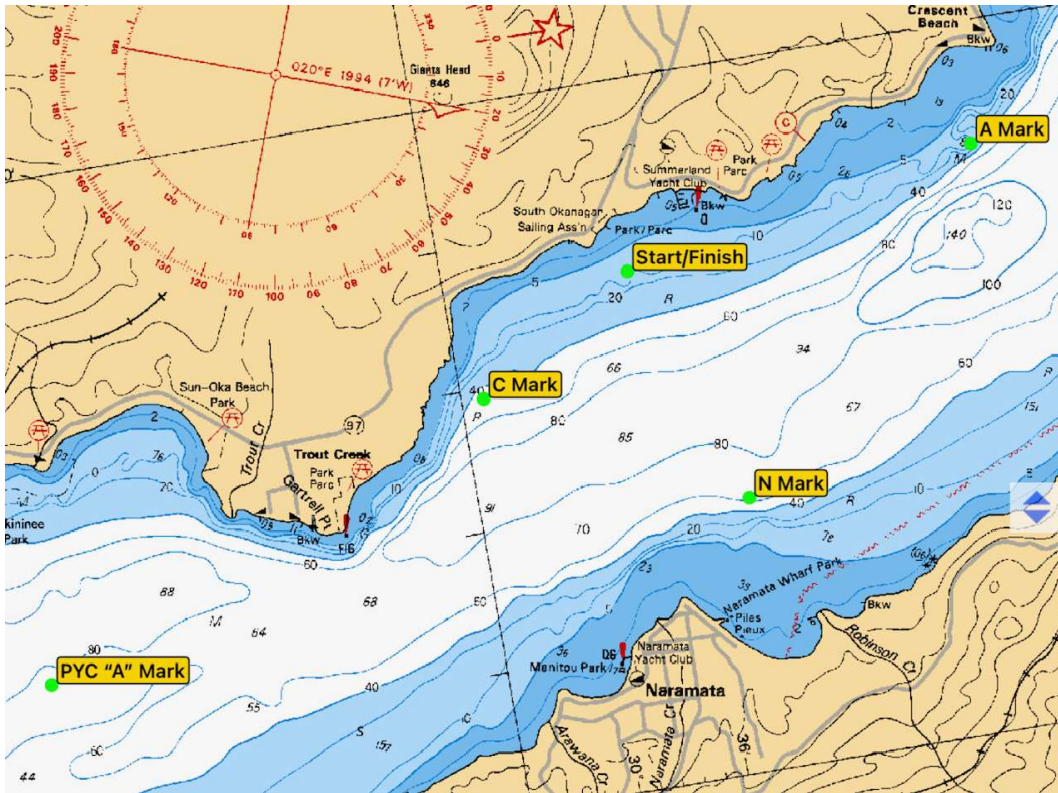
RRS 3 states: 'The responsibility for a boat's decision to participate in a race or to continue to race is hers alone.' By participating in this event each competitor agrees and acknowledges that sailing is a potentially dangerous activity with inherent risks. These risks include strong winds and rough seas, sudden changes in weather, failure of equipment, boat handling errors, poor seamanship by other boats, loss of balance on an unstable platform and fatigue resulting in increased risk of injury.

Inherent in the sport of sailing is the risk of permanent, catastrophic injury or death by drowning, trauma, hypothermia or other causes.

21 INSURANCE

Each participating boat shall be insured with valid third-party liability insurance with a minimum cover of \$1million per incident or the equivalent.

22 COURSE DIAGRAM



Marks, described on the Racing Areas, are approximately located as follows: -

	Race Buoy Positions	
Start / Finish	Lat	49° 35.848' N
	Lon	119°38.642' W
SYC A Mark	Lat	49° 37.490' N
	Lon	119°39.126' W
SYC C Mark	Lat	49° 35.103' N
	Lon	119°37.922' W
SYC N Mark	Lat	49° 36.221' N
	Lon	119°36.922' W
PYC "A" Mark	Lat	49° 32.938' N
	Lon	119°36.443' W

23 Bruno Lieppe 2023 Club Racing Courses

North Starts / SB Rounding		
1	X - A - X	3.43 nm
2	X - A - N - X	4.76 nm
3	X - A - PYC A - X	9.78 nm
4	X - A - N - PYC A - X	10.12 nm
5	X - A - C - X	5.06 nm

South Starts / Port Rounding		
6	X - C - X	1.76 nm
7	X - C - PYC A - X	6.49 nm
8	X - C - A - X	5.06 nm
9	X - C - A - N - X	6.48 nm
10	X - PYC A - X	6.48 nm

There may be more than one lap for each course and courses may be used in combination.

All competitors must monitor channel 68 for Race Committee updates.